

Pirate Productions and American International School of Luxembourg
presents

Rodgers and Hammerstein's



19, 20, 21 March 1997 • 20:00
22 March • 16:00

Athenée de Luxembourg / Merl

Music by **RICHARD RODGERS** Book and Lyrics by **OSCAR HAMMERSTEIN II**
Based on the play "Green Grow the Lilacs" by Lynn Riggs • Original Dances by Agnes de Mille



from Babe to Beckett

from Riverdance to Racine

from Snow White to Stoppard



- * Come to us for all you need to keep you entertained, informed and amused - books, magazines, cards and all the latest videos !
- * If we don't have it on the shelves, just ask - we can order it.

Chapter 1

42 rue Astrid, L-1143 Belair
Tel. 44 07 09 / Fax. 44 06 92

Opening Hours:
Monday - Saturday 10.00 - 18.00
Sunday 8.30 - 13.00

Aunt Eller says . . .

Get your T-Shirt from

PM Sports

**2 rue de Canach, L-5367 Schuttrange
Tel. 35 63 64; Fax 35 87 78**

**Opening hours:
Tuesdays - Saturdays: 1.00 - 6.00 p.m.**



GEORGE AND DRAGON

LARGE SELECTION OF ENGLISH AND
IRISH TRADITIONAL FINE ALES

EXTENSIVE BAR SNACK MENU

BEER GARDEN

LARGE CAR PARK

217 rue Albert Uden
L-2652 Luxembourg
tel 47 41 86

ATHENEE
de
LUXEMBOURG

24, boulevard Pierre Dupong
L-1430 Luxembourg
44 15 57

✶ The Athénée is very pleased to welcome Pirate Productions and the American International School to its Salle des Fêtes for ~~the~~ Rodgers and Hammerstein's Oklahoma presentation.

Besides our own activity in performing various plays and songs from the American musical repertoire, we take advantage of the opportunity to improve our contact with the American International School in order to learn from it, give our pupils an opportunity to meet and get to know one another better and possibly join forces for common ventures. We are looking forward to a successful future cooperation and express our best wishes for the success of Oklahoma.

✶ Mr Haag - Director, Athénée.

The American International School and Pirate Productions are very pleased to welcome you to their production of OKLAHOMA.

J Our artistic director Eileen Nober and musical director Peggy Kenks have been putting us through our paces at a furious rate since before Christmas. Those of you who know Oklahoma will recognise that it makes extreme demands in terms of troupe size, acting, singing and dancing. Putting together such a show is no easy enterprise. All has now come together and we believe we have a show well worth viewing.

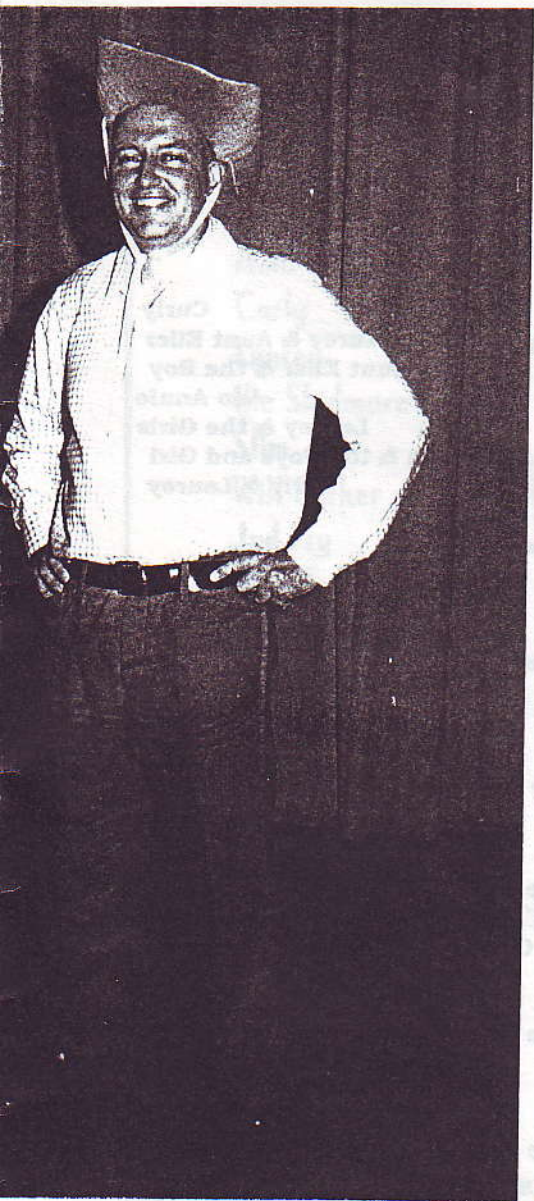
gh This production is the joint effort of the American International School and Pirate Productions, Luxembourg's musical theatrical group. Interestingly enough the origins of Pirates are lodged in just such a co-operative effort! Many years ago when AISL director Harry Barteau wanted to produce "The Pirates of Penzance" and found that the student body was too small for such a production, he enlisted the aid of the local expatriate community. That show was apparently a tremendous success and led to the formation of Pirates as a permanent feature of Luxembourg's amateur theatre.

In our Oklahoma joint venture the school is providing the directors and practise space and has a significant number of students and faculty in the cast, including several leading roles. Pirates provides the remainder of the cast, logistical, financial and public relations expertise. The result of these efforts is soon to be known but we hope you enjoy the performance and urge everyone interested in English theatre and musical comedy to judge for themselves.

Gerry Shields - Director.

The association of Pirate Productions and the American International School goes back almost twenty years. Pirate Productions was born from the success of a production of the Gilbert and Sullivan operetta, *The Pirates of Penzance*, organised and sponsored by the American International School. Today the roles have been reversed and it is the Pirates who are organising and sponsoring OKLAHOMA and AISL who are providing the talented expertise of Eileen Nober as director and Peggy Jenks as musical director. As before, the cast is a combination of AISL students and staff, including the director Gerry Shields and Pirate members, new and old, of many different nationalities. Oklahoma, however, marks a new departure in venue with the use of the Salle des Fêtes of the Athénée de Luxembourg. Here too there is a long standing association between the AISL and Mr Emile Haag, the director of the Athénée. Mr Haag has been both faculty and Board member of AISL and has been wonderfully welcoming to the Oklahoma team. This combination of different groups has proved an exciting mix and Pirates hopes it is one that can be repeated and extended in future productions. Our sincere thanks to all the many enormously enthusiastic people who have made Oklahoma possible.

Angela Milne, Chair, Pirate Productions.



This is a photograph of Harry Barteau, taken thirty years ago in May 1967, when he appeared in a production of Oklahoma. As you may have read, Harry was instrumental in starting Pirates. His wife told me that after the very first production of The Pirates of Penzance, a lot of people decided to start 'Pirate Productions' and were worried that Harry might think it was being taken away from him. His 'typical' reaction was, "good, that is what I wanted to happen", and far from being worried about it being taken away from him and the school, Harry was delighted with the start of Pirate Productions. This page is dedicated to the memory of Harry Barteau who died recently. We thank him for helping to start Pirates, which has given such a lot of entertainment and much enjoyment to so many people over the last twenty years.

group?

MUSICAL NUMBERS

ACT 1

Scene 1

Oh, what a beautiful mornin'	Curly
The Surrey with the Fringe on Top	Curly, Laurey & Aunt Eller
Kansas City	Will, Aunt Eller & the Boy
I Cain't Say No	Ado Annie
Many a New Day	Laurey & the Girls
It's a Scandal ! It's a Outrage !	Ali Hakim & the Boys and Girl
People Will Say We're in Love	Curly & Laurey

Scene 2

Pore Jud	Curly & Jud
----------	-------------

Scene 3

Out of My Dreams	Laurey & the Girls
------------------	--------------------

ACT 2

Scene 1

The Farmer and the Cowman	Carnes, Aunt Eller & Ensemble
All or Nuthin'	Ado Annie, Will & two girls

Scene 2

People Will Say We're in Love	Curly & Laurey
-------------------------------	----------------

Scene 3

Oklahoma	Curly & Ensemble
Oh, What a Beautiful Morning	Laurey, Curly & Ensemble
FINALE	ENTIRE COMPANY

Cast List

Principals - in order of appearance

Aunt Eller	Angela Milne
Curly	David Bennett
Laurey	Carole Williams
Ike Skidmore	Jonathan Hearfield
Slim	Christopher van der Lugt
Will Parker	Doug Haley
Jud Fry	Alex Teligadas
Ado Annie Carnes	Natalie Ondiak
Ali Hakim	Brian Parker
Gertie Cummins	Amanda Hyatt
Andrew Carnes	Guy Moat
Cord Elam	Vincente Drews

Triple trio

Carol Abel	Susan Buckalew
Christine Mathonet	Jieun Suh
Rachel Turner	Edith van den Heuvel
Julia Vinicombe	Isabella van Holstein
Janice Wakem	Von

Men's Chorus

Alexander Atkins	Roger Clough	
John Hall	Robert Moore	Gerry Shields

Ladies Chorus

Deborah Anderson	Kate Bailey
Carole Dagand	Molly Guess
Erin Jordan	Jij Linster-Besch
Catarina Marques	Anne Servio
Gitte Stilling	Anna Vaudrey

Dancers

Sandy Octave	Choreography
Lynn Simon	Tap Dance and Ballet
Daniel Jenks	Tap Dance and Ballet
Barbara Curwen	Ballet
Catherine Blanc	Ballet
Christina Bienert	Ballet
Daniela Pavone	Ballet
Isabella Herber	Ballet
Karen Hoy	Ballet

Eileen Nober

Choreography - Farmer & Cowman

Backstage

Stage Manager

Linda Myers

Assistant Stage Manager

Geoff Stevens

Backstage Crew

?
Eugenie Lourie

Ken Saunders

Malcolm Turner

Simon Critchlow

Thomas Stevens

Lighting

Alan Carlisle - Lighting Plan

Sam Hariton

Adabella van der Zand

Sound

Paul Hohlman

Claude Schandel

Set Design

Liz Turner

Set Building

Malcolm Turner

Simon Critchlow

Eugene Lourie

Sam Hariton

Hannah Janiszewski

Costume Co-ordinator and Designer

Lucinda Jobe

Costume production

Hilary Brown

Ria Mordjik

Susie Roux

Hair

Pat Chambers

Melanie Cardew

Make up

Linda Woodhall

Judy Milne

Louise Curwen

Mair~~X~~ead Cranfield

Sally Cardew

Ticket Sales

Pam Carlisle

Erica Bastian

Bar Organisation

Erica Bastian

Concierge at the Athenee

Herman Vanderkeer

Video

Chris Atkinson

Poster and Programme Cover Design

Sasha Foppiano

Programme Layout

Geoff Stevens

Publicity

Jane Philpott

Geoff Stevens

Special thanks to:

The Director of the Athénée for the use of their facilities.

The Director of AISL for the use of their rehearsal and set building facilities.

New World Theatre ^{Club} for the use of their lights.

Sandy Octave (Yaga Antony school of dance).

Helle Clemmensen for Curly's hair.

Marilyn Stephenson for the use of her baskets.

Connie's Jeans for donation of shirts.

Centre Equestre Ducal for the use of the western saddle.

The Seymours for the use of horse riding props.

Geoff Stevens, Anne Knickle, cast members for various props.

The Music Shop.

Janice Lemm for assisting with chorus rehearsals.

Sue Ondiak and Caroline Bailey for rehearsal lunch.

Did you know that the State of Oklahoma has Texas to the south, New Mexico to the west, Colorado and Kansas to the north and Missouri and Arkansas (Bill Clinton, ex-Governor) to the east. Members of 67 native American tribes (Indians) live in Oklahoma. The central and eastern part of the state has a lot of oil. Tulsa, in the north-east of the state has the Gilcrease Institute of American History and Art for pioneer history and Indian artefacts. Mohawk Park, 6 miles north-east of Tulsa has a fine zoo and a herd of roaming buffalo. Gene Pitney once sang about being ' 24 hours from Tulsa '. The town of Pawnee was the home of Pawnee Bill, a partner of Buffalo Bill. Five Indian tribes live at Pawnee. Oklahoma City is the state capital and is in the centre of the state. It has the National Cowboy Hall of Fame with many cowboy and Indian exhibits. Anadarko is an Indian City, an authentic recreation of an Indian village, depicting dwellings of seven different tribes. The National Rodeo finals are held in Oklahoma City in December. Tulsa has an Indian week in August and an annual Tulsa Pow-wow. Anadarko has an American Indian Exposition in August with ceremonial dances, games and races. Oklahoma is on American Central time.

We hope that you have read the programme, remembered our advertisers, enjoyed an interval drink, but above all have had a great evening of entertainment.

We have all worked hard, for many hours over many months, but we have all had fun as well.

We take part in a Pirates production because we like to sing, sew, dance, paint, act, build, sell tickets, play the horn, meet new people, direct, produce or any number of other reasons. If you would be interested in doing any of the above activities, why not join us ?

Just phone one of us and we will contact you when our next production is about to begin.

Angela Milne	Chair	66 01 92
David Bennett	Secretary	42 88 23
Simon Critchlow	Treasurer	33 38 15
Jane Philpott	Publicity	66 10 85
Geoff Stevens	News	37 12 84
Brian Parker	News	25 27 84
Victoria Ball	Membership	44 63 92
Steve Preston	Social	52 08 93



CENTRE EQUESTRE DUCAL
1 route de Trèves - Findel
L-2632 LUXEMBOURG

LAB specialises in superior Archive & Information Systems:

Document Management

- Archive Safety Deposit Rooms
- Computerised Inventory
- Rapid Retrieval & Delivery
- Secure Destruction

Computer Media Storage

- Environmentally Controlled Off Site Storage
- Secure Collection, Delivery & Destruction

Optical Archiving

- Datastore For Windows
- OCR & Imaging Systems

Zone Industrielle, L-5366

Münsbach

Tel 428989 / Fax 428939



LUXEMBOURG / ESCH/ALZ.

VOYAGES 
ALBATROS
At your Disposal

229, route d'Arlon - L-8002 Strassen

Telephone 31 11 59/60

PIANOS IIII KELLY

*Teach Your Piano To
Play Quietly.*

PianoDisc's new QuietTime
gives your acoustic piano a
lesson in silence. With the
simple pull of a lever, your
piano effortlessly transforms
from an acoustic to an
electronic instrument, without
sacrificing the benefits of either.
QuietTime makes playing your
piano appropriate any time
and any place.

PianoDisc

*Shop opening times:
Tuesday-Wednesday-Friday 14.00-18.00
Thursday 14.00-20.00
Saturday 9.30-12.00 14.00-16.30*

*17, rue de Munsbach
L-6941 NIEDERANVEN*

TEL: 347069 FAX: 340716



IBACH

BECHSTEIN

YAMAHA

WELMAR

WILH. STEINBERG

HOFFMANN

SAMICK

YAMAHA DISKLAVIER

ST. GEORGE'S INTERNATIONAL SCHOOL

In September 1996, St George's School made a highly successful move to its present premises in Cents. St George's offers a British Style Education to children from the ages of 3 to 11. The School also operates a Special Needs programme, in parallel with its mainstream classes, for children with learning difficulties. This includes intensive assistance to children who join with little or no English.

In September 1997, St George's moves to its final home in Weimershof. In the new premises, a self-contained "British style" Primary School, we are looking into the feasibility of extending their minimum age-range and opening a creche. The School has recently set up a link with a boarding school in the UK, offering not only continuity of education but also significant reductions for pupils of 11+ from St George's.

The School offers the highest quality of education in small classes at competitive fee levels. If you would like to visit St George's, Mr Boyce, the Headmaster, would be delighted to show you round the School and answer any queries you may have. We look forward to meeting with you.

St George's International School

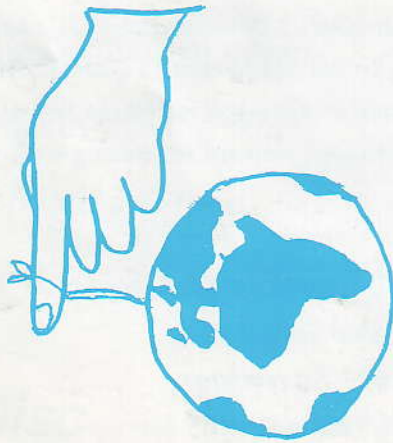
Rue Tornaco

L-2623 Luxembourg

Tel/Fax: 43.63.69

E-Mail: 101737.1752@compuserve.com

American International School of Luxembourg



- Pre-school from 3 years through University entrance.
- English language curriculum with English Second Language support programme.
- International Baccalaureate and Advanced Placement programme.
- Upper School to prepare for universities around the world.
- Over 400 students over 30 different countries.
- Sports, drama, music, clubs and other extra curricular activities.
- Small classes and strong support programmes in ESL and special needs.
- Applications being accepted for September 1997

Give them the world.

For more information please contact Mrs Bray, Registrar, 188
Ave de la Faiencerie, L-1511, Luxembourg, Grand Duchy of
Luxembourg. Tel : (352) 47002023 or Fax: (352) 229028.