

There's no Business like Show Business

for Band

Irving Berlin
arr. Naohiro Iwai

A Bright Tempo **B** ERIC

Vocals

5

There's no bu___ siness like

8

show bu___ siness like no bu___ siness I know. E very thing a bout it is ap

12

pealing E very thing the traf fic will al low. No where could you have that hap py

16

feeling ___ when you aren't stea ling that ex tra bow. DOM There's

C 21

no peo___ ple like show peo___ ple they smile when they are low.

25

Yes ter day they told you you would go too far___ that night you o___ pened and

28

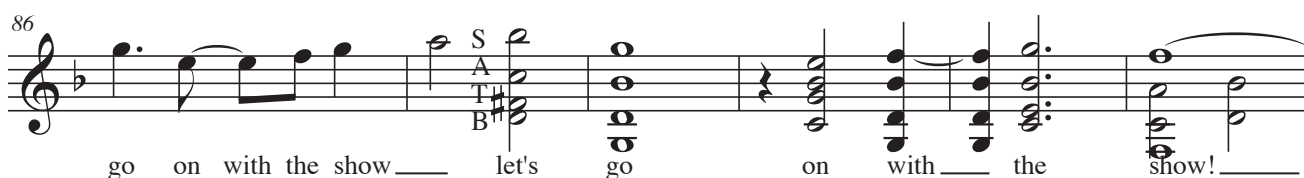
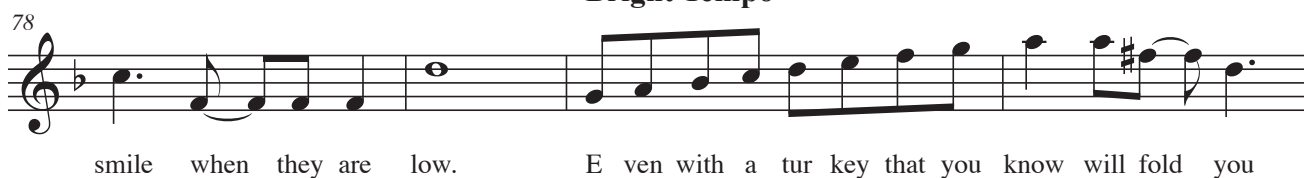
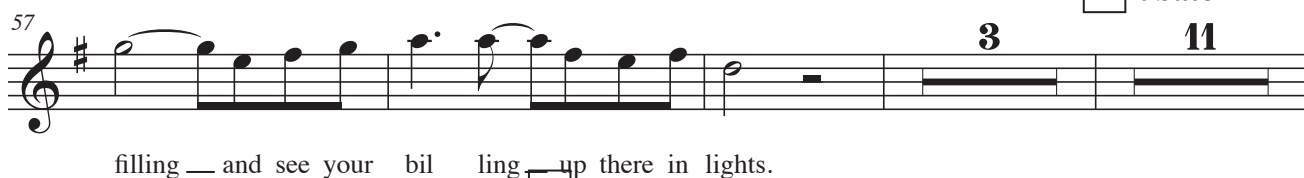
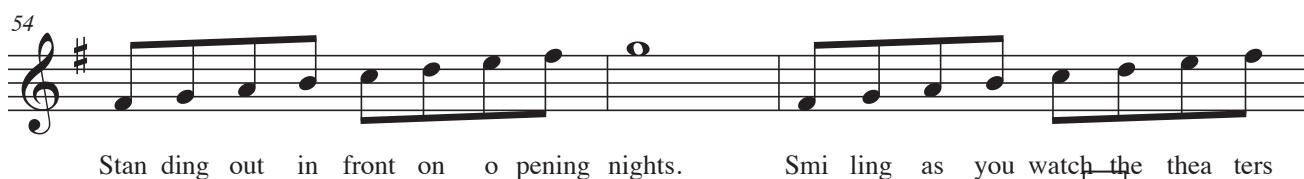
there you are. D & E Next day on your dres sing room they've hung a star, let's

31

go on___ with the___ show! ERIC The

F 36

but cher, the ba ker, the gro cer, the clerk are se cret ly un hap py men, be cause The



92

The musical score for 'There's no Business like Show Business' begins at measure 92. It is written on a grand staff with a treble and bass clef. The key signature has one flat (B-flat). The melody in the treble clef consists of half notes: G4, A4, Bb4, A4, G4. The bass line consists of quarter notes: G3, F3, E3, D3, C3. A slur covers the first two measures of the melody. The piece ends with a double bar line at the end of the fifth measure.