

Let's Do It (Let's Fall in Love)

From Can Can

Piano

Cole Porter

Piano

Measures 1-5 of the piano introduction. The key signature has two flats (B-flat and E-flat), and the time signature is common time (C). The music features a mix of chords and single notes in both the treble and bass staves.

Measures 6-10 of the piano introduction. The melody in the treble staff becomes more active with eighth and sixteenth notes, while the bass staff continues with a steady accompaniment.

Measures 11-16 of the piano introduction. The piece continues with a consistent harmonic and rhythmic pattern, building up to the start of the main section.

Measures 17-21 of the piano introduction. Measure 17 is marked with *8va - accel.*. Measure 21 is marked with a box containing 'A' and the text *Faster (in 2)* with 'swing' written below it. A double bar line follows measure 21.

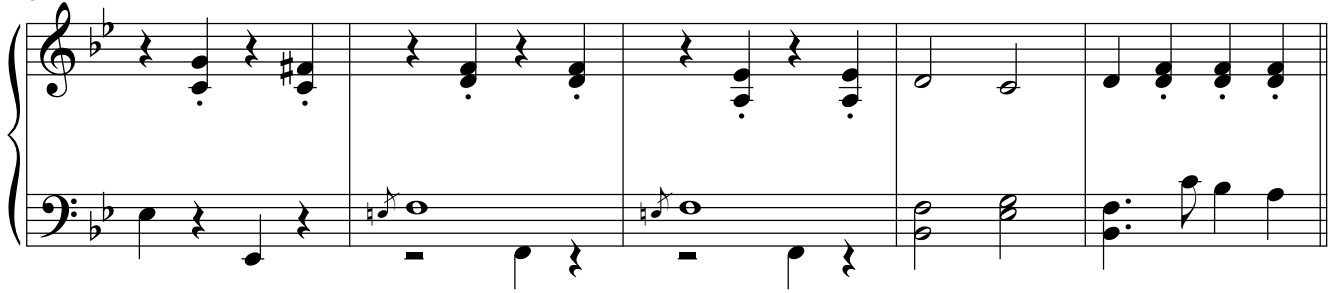
Measures 22-26 of the piano introduction. The music continues in the new tempo and meter, featuring a more rhythmic and driving accompaniment in the bass staff.

Let's Do It (Let's Fall in Love), p. 2

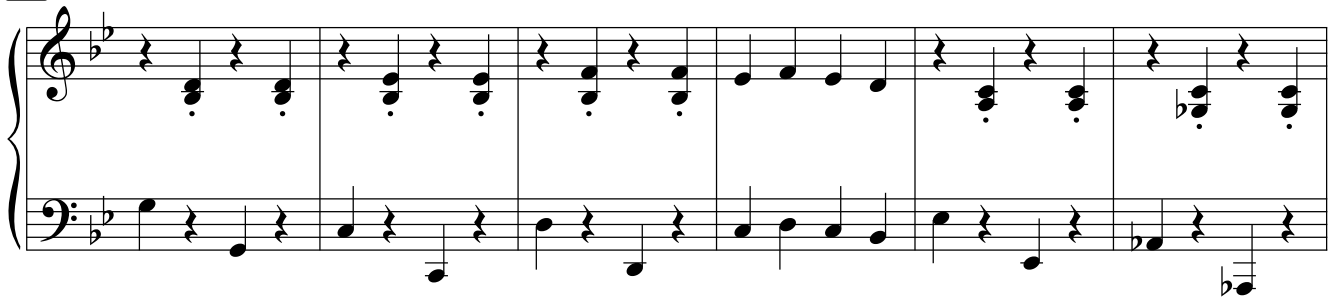
27



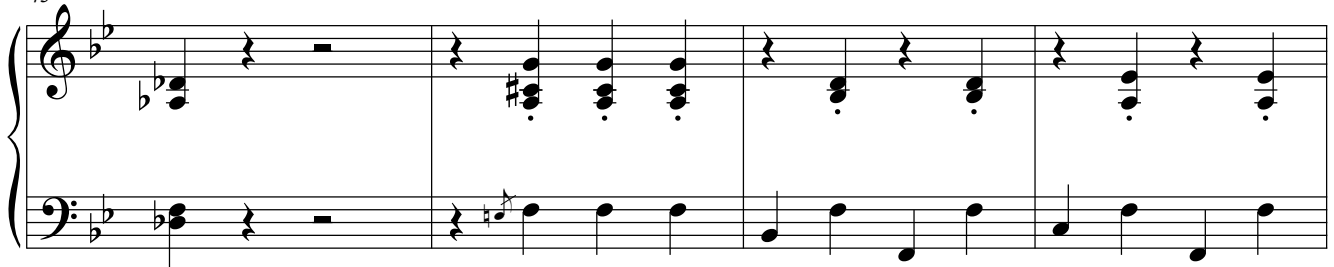
32



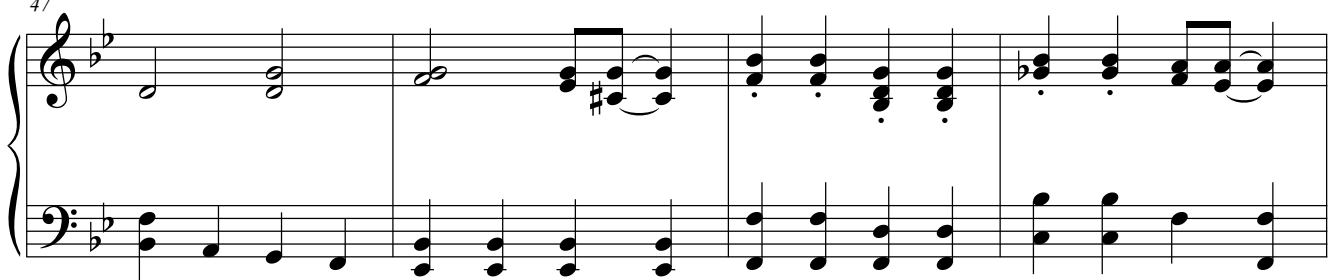
B



43



47



51

