

Begin the Beguine

From Jubilee

Cole Porter

Cole Porter

Arranged by Philip Dutton

Voice

When they be - gin _____ the beg - uine _____ It

9 brings back the sound _____ of mu - sic so ten - der, _____ It brings back a night _____

14 _____ of trop - i - cal splen - dor, _____ It brings back a mem - o - ry ev - er green. _____

20 _____ I'm with you once more _____ un - der the stars, _____ And down by the shore

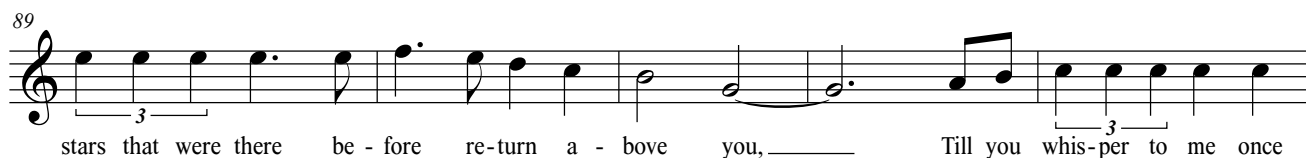
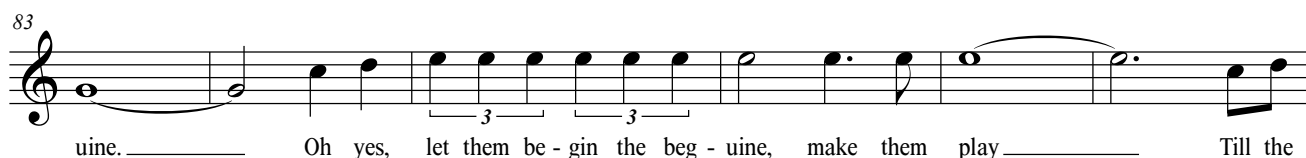
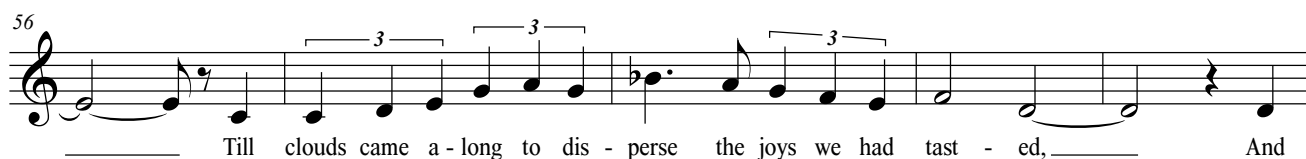
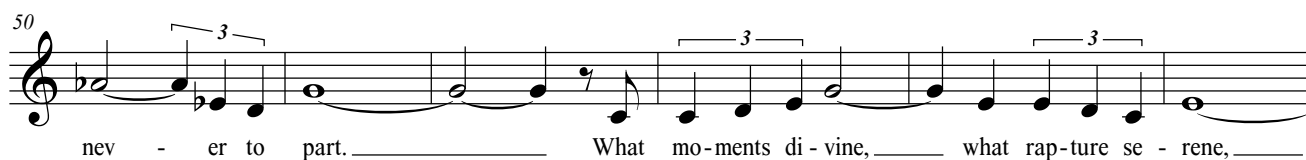
26 _____ an or - ches - tra's play - ing _____ And e - ven the palms _____ seem to be sway - ing _____

32 _____ When they be - gin _____ the beg - uine. _____ To live it a - gain _____

38 _____ is past all en - deav - Ex - cept when that tune _____ clutch - es my heart, _____

44 _____ And there we are, swear - ing to love for - ev - er, _____ And prom - is - ing nev - er,

Begin the Beguine, p. 2



Begin the Beguine, p. 3

100

When they be-gin the beg - uine When they be-gin

Detailed description: This block contains the musical notation for measures 100 through 106. The notation is on a single staff with a treble clef. Measure 100 starts with a whole rest. Measures 101-102 contain a triplet of eighth notes (G4, A4, B4) followed by a half note (B4). Measures 103-104 contain a half note (B4) followed by a quarter note (A4). Measures 105-106 contain a half note (G4) followed by a quarter note (F#4). The lyrics 'When they be-gin the beg - uine When they be-gin' are written below the staff, with lines indicating where the notes align.

107

the beg - uine

Detailed description: This block contains the musical notation for measures 107 through 113. The notation is on a single staff with a treble clef. Measures 107-108 contain a half note (G4) followed by a quarter note (F#4). Measures 109-110 contain a half note (E4) followed by a quarter note (D4). Measures 111-112 contain a half note (C4) followed by a quarter note (B3). Measure 113 contains a half note (A3) followed by a quarter note (G3). The lyrics 'the beg - uine' are written below the staff, with lines indicating where the notes align.